



INSTRUCTION BULLETIN

No. 9012965
Machine: T17 / M17
Published: 05-2016
Rev. 01

NOTE: DO NOT DISCARD the Parts List from the Instruction Bulletin. Place the Parts List in the appropriate place in the machine manual for future reference. Retaining the Parts List will make it easier to reorder individual parts and will save the cost of ordering an entire kit.

NOTE: Numbers in parenthesis () are reference numbers for parts listed in Bill of Materials.

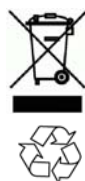
Installation instructions for **kit number 9020029**

SYNOPSIS:

This kit contains the parts needed to install an optional overhead guard onto T17 scrubbers / M17 sweeper- scrubbers.
Please follow step-by-step instructions.

SPECIAL TOOLS / CONSIDERATIONS: 2-1/4" and 1-1/2" dia. hole saw

(Estimated time to complete: 4 hours)



PROTECT THE ENVIRONMENT

Please dispose of packaging materials, used machine components such as batteries and fluids in an environmentally safe way according to local waste disposal regulations.

Always remember to recycle.

PREPARATION:

1. Park the machine on a clean level surface, turn off the machine, set the parking brake, and remove the key.

FOR SAFETY: Before leaving or servicing machine, stop on level surface, turn off machine, set parking brake, and remove key.

INSTALLATION:

1. Disconnect the battery cable from the machine and remove the battery from the machine.

FOR SAFETY: When servicing machine, use a non-conductive battery removal device, use a hoist and adequate assistance when lifting batteries, follow site safety guidelines concerning battery removal, and battery installation must be done by trained personnel.

2. **Machines with slide out battery option**
only: Remove the slide out battery assembly from the machine. Set slide out assembly and all hardware aside. These items are reinstalled after the overhead guard is installed. (Fig. 1)

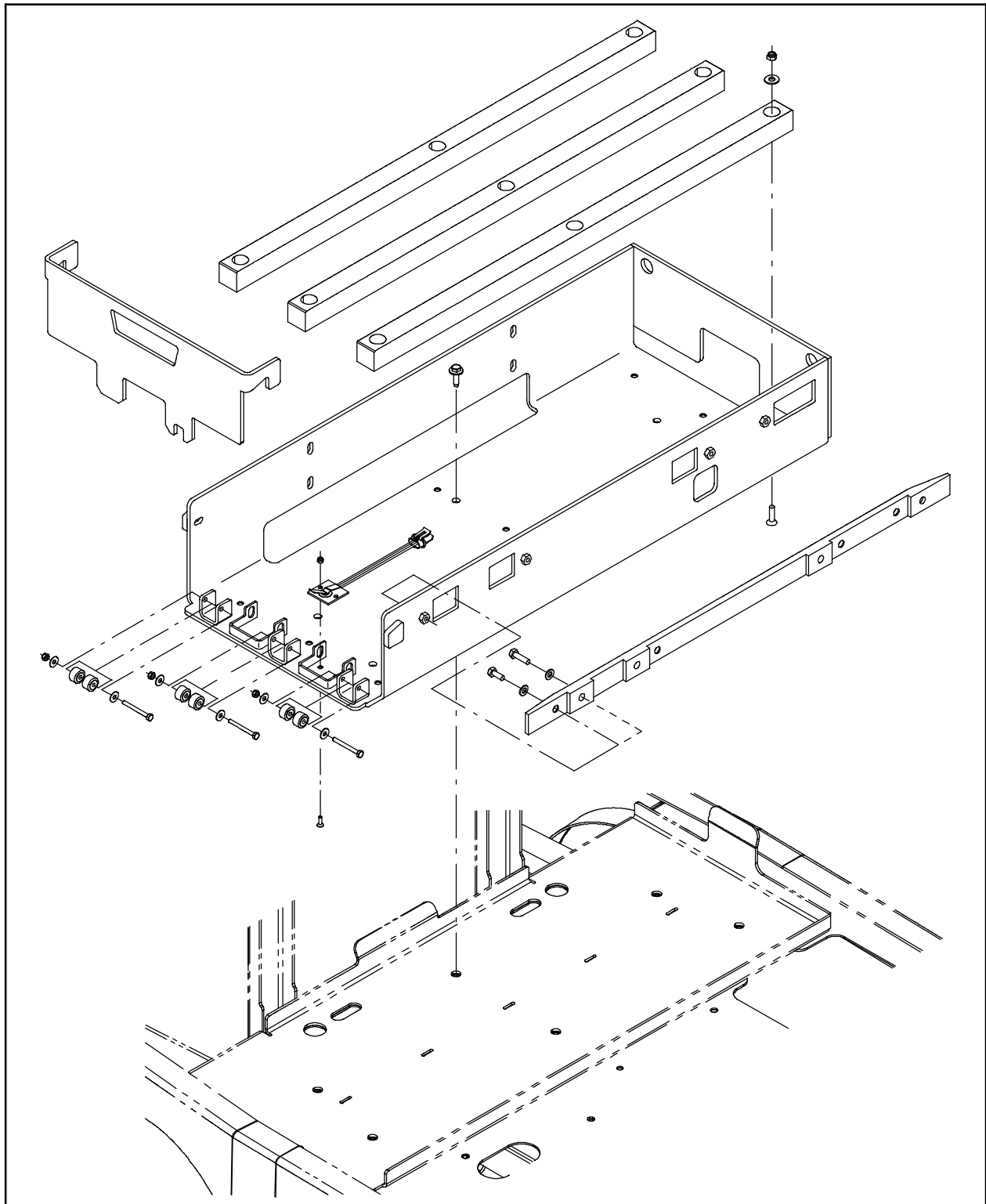


FIG. 1

3. Remove the battery compartment cover.
4. Clamp the template (22) on the cover aligning the latch hole with the recessed surface. (Fig. 2)

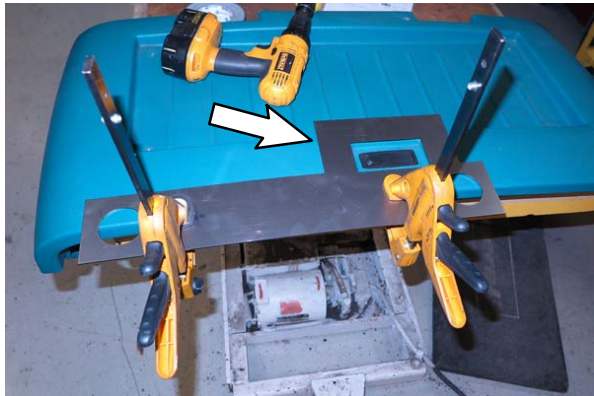


FIG. 2

5. Drill two holes through the battery compartment cover by using a 2-1/4" dia. hole saw or jigsaw. (Fig. 3 / Fig. 8)

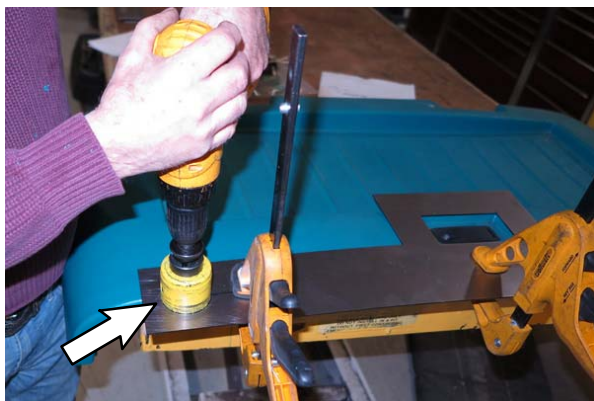


FIG. 3

6. Remove the seat shroud from the machine (do not remove the seat from the shroud).
7. Clamp the template (23) under the top lip of the seat shroud. (Fig. 4)

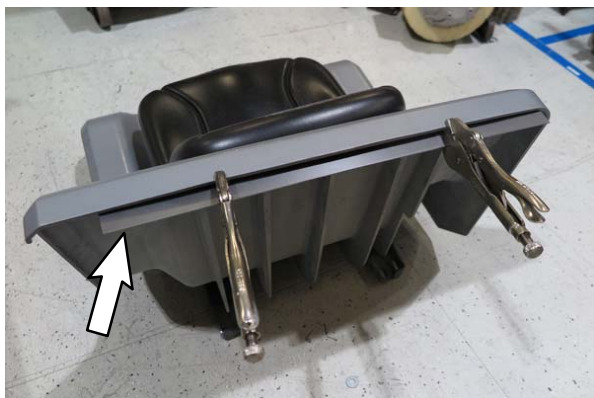


FIG. 4

8. Drill two small pilot holes through the seat shroud from the bottom of the template. (Fig. 5)



FIG. 5

9. Drill two holes through the pilot holes in seat shroud by using a 1-1/2" dia. hole saw. (Fig. 6)



FIG. 6

10. Cut slots from the drilled holes using a jigsaw. (Fig. 7 / Fig. 9)



FIG. 7

11. Insert the right OHG trim cover (18) and left OHG trim cover (19) into the areas cut to check for fit. If necessary, cut additional material from battery compartment cover so the covers fit. (Fig. 8)

12. Use two pan screws (14) to trim covers onto the battery compartment cover. (Fig. 8)

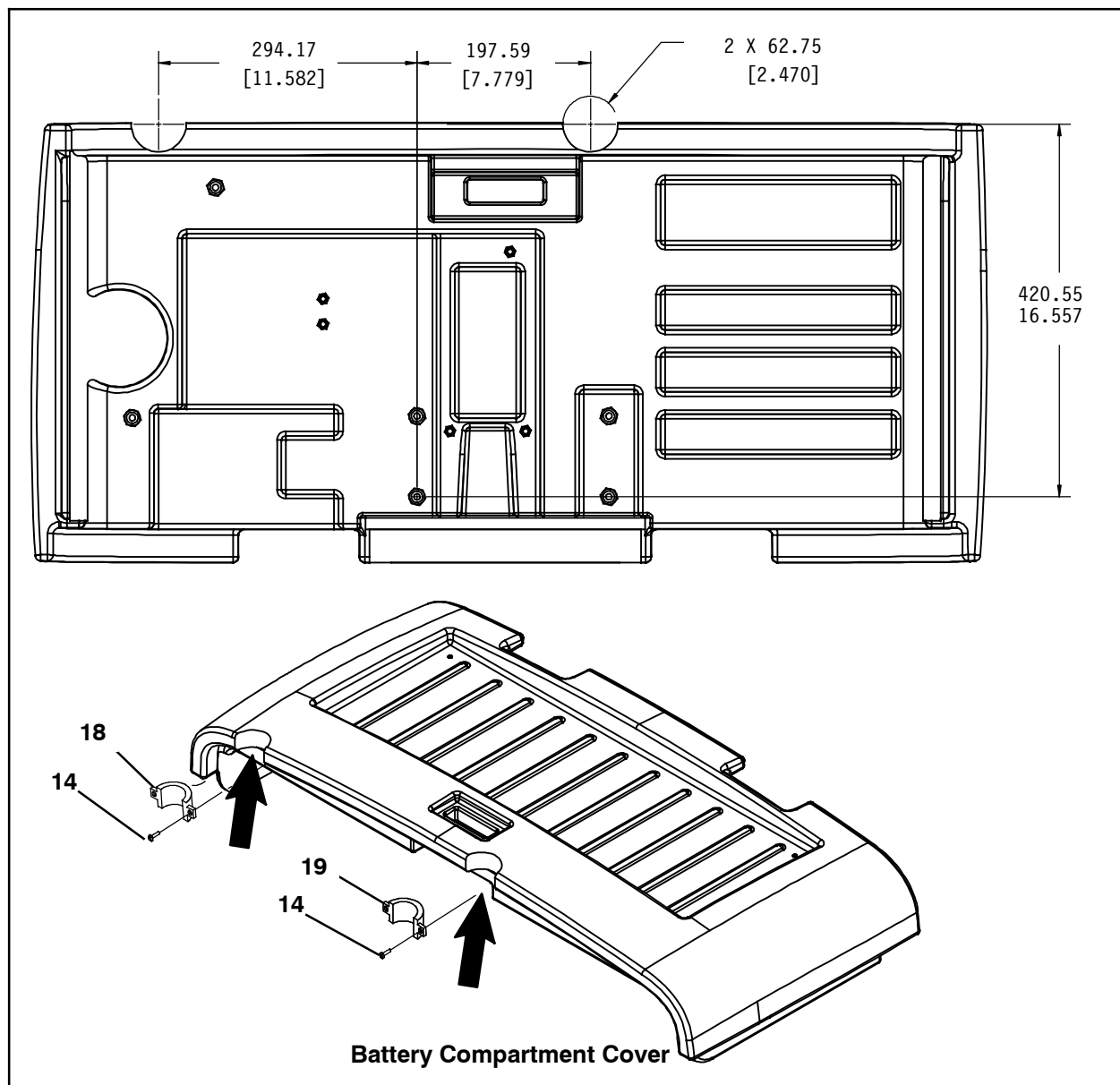


FIG. 8

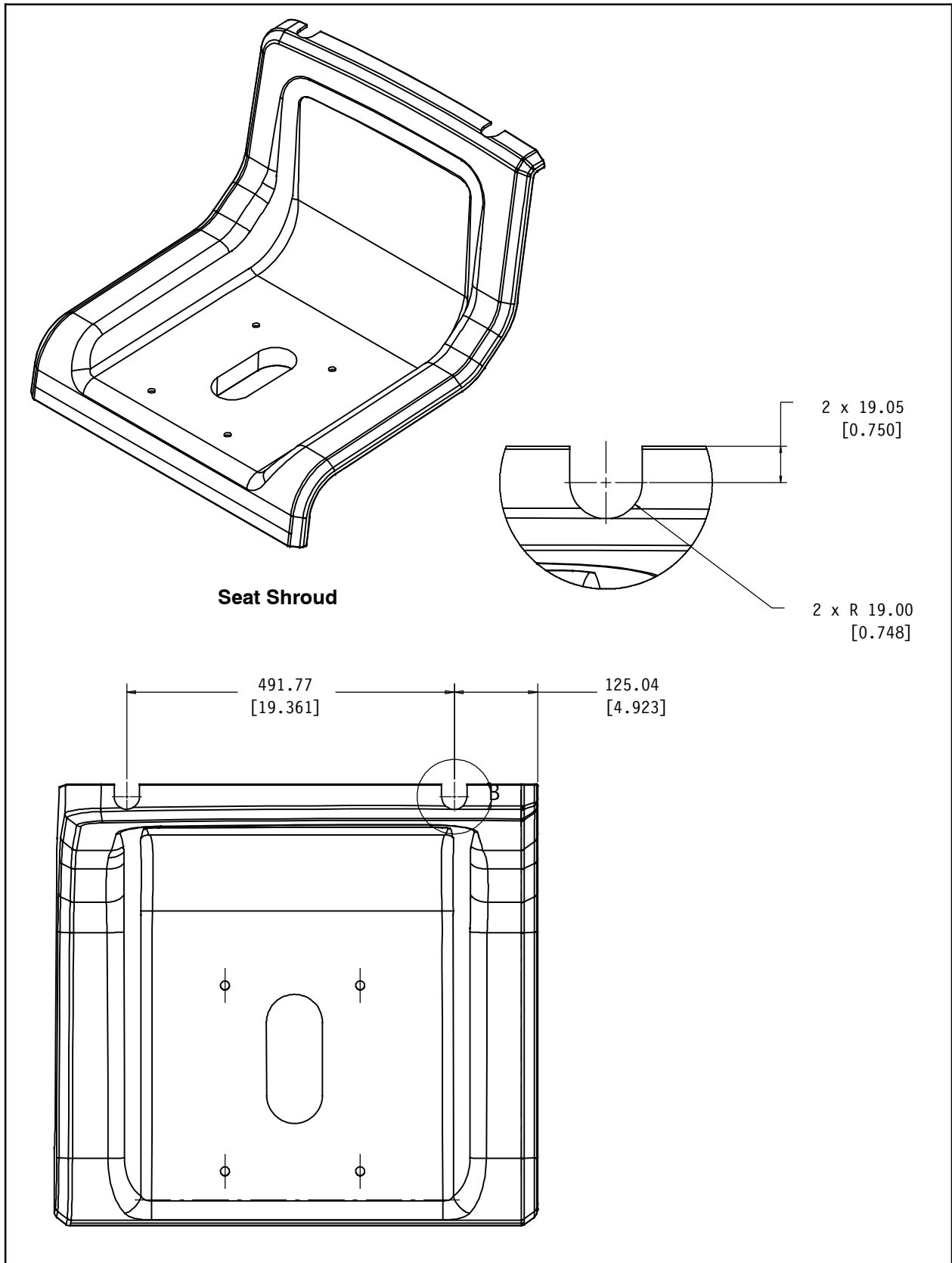


FIG. 9

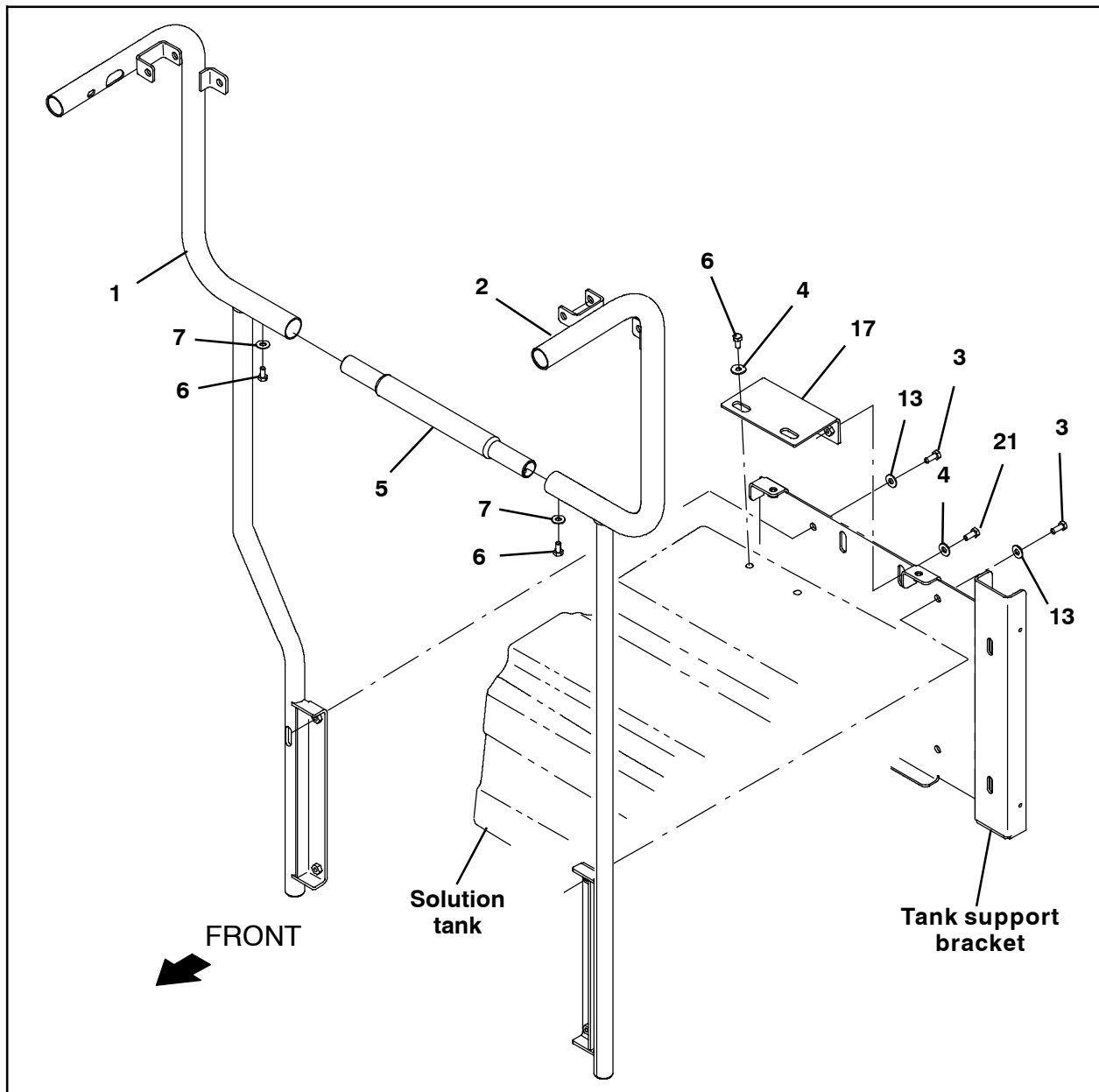


FIG. 10

NOTE: Do Not completely tighten hardware used to install the overhead guard onto the machine. All hardware is tightened during final adjustment.

13. Use two M8 hex screws (3) and two flat washers (13) to install the left overhead guard (2) tube onto the tank support bracket. (Fig. 10)
14. Install the rear overhead guard tube (5) onto the left overhead guard tube (2). (Fig. 10)
15. Slide the right overhead guard tube (1) onto the rear overhead guard tube (5) and use two M8 hex screws (3) and two flat washers (13) to install the right overhead guard tube (1) onto the tank support bracket. (Fig. 10)
16. Use two M8 hex screws (6) and two flat washers (4) to install the overhead guard mounting bracket (17) onto the solution tank. (Fig. 10)
17. Use two M8 hex screws (21) and two flat washers (4) to install the overhead guard mounting bracket (17) onto the tank support bracket. (Fig. 10)
18. Use a M8 hex screw (6) and flat washer (7) to secure the rear overhead guard tube (5) to the right overhead guard tube (1) and left overhead guard tube (2). (Fig. 10)

19. Remove the two M5 pan screws securing the mesh to the front of the mesh plate. Set the M5 pan screws aside. (Fig. 11)

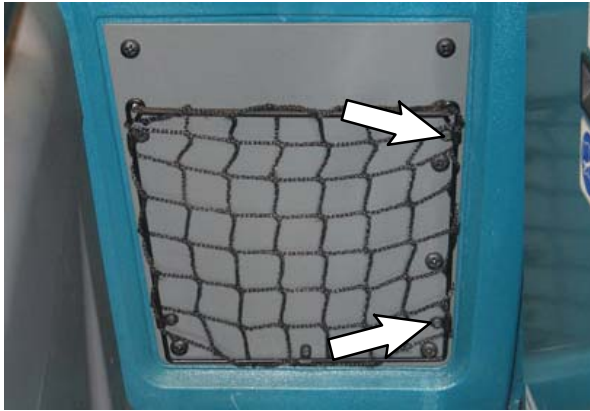


FIG. 11

20. Remove and discard the four M8 hex screws securing the front of the mesh plate to the solution tank. (Fig. 12)

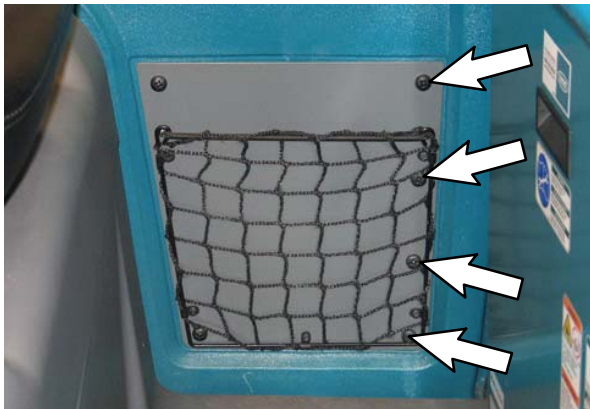


FIG. 12

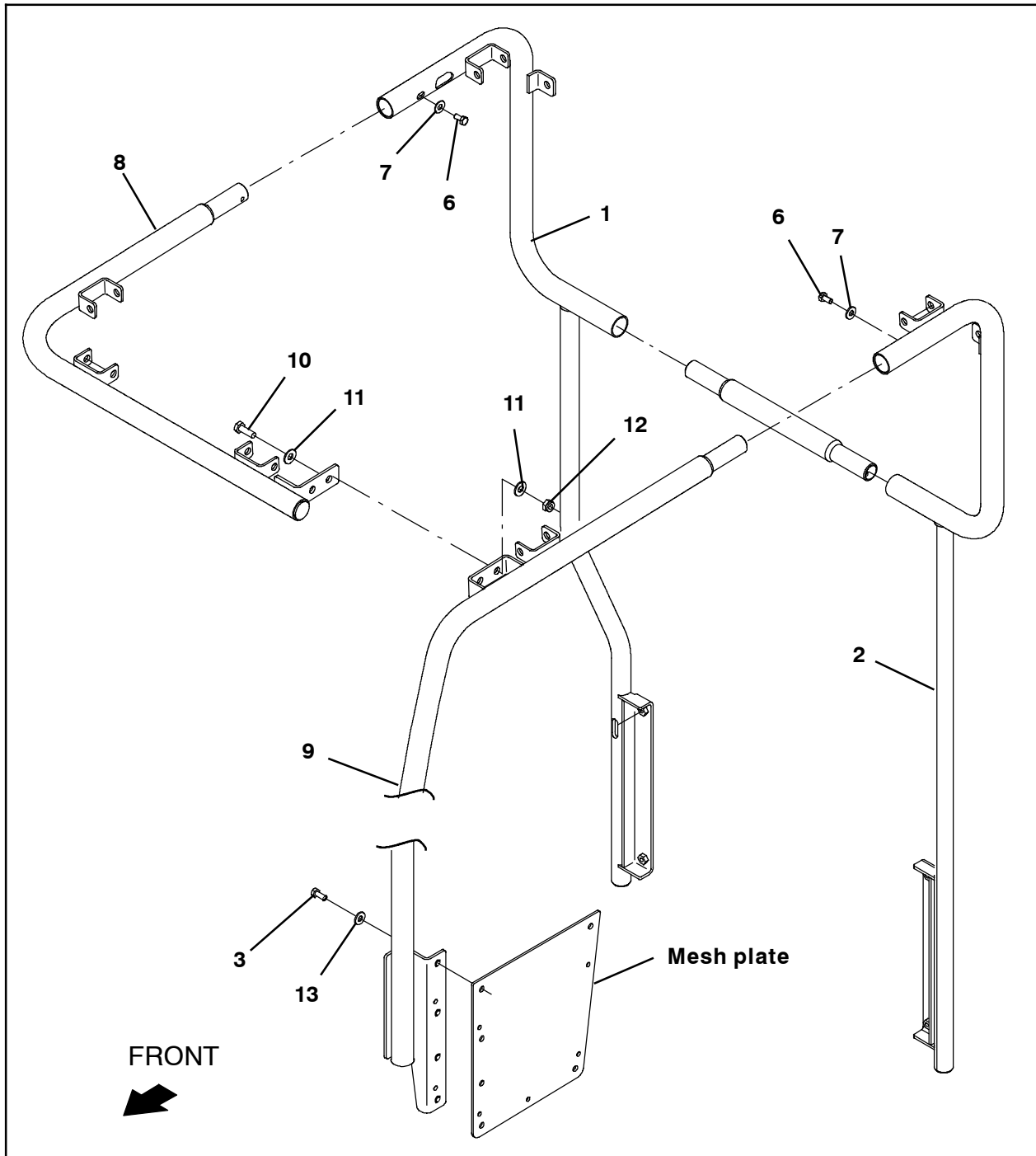


FIG. 13

21. Install the left front guard tube (9) onto the left overhead guard tube (2) and use four M8 hex screws (3) and four flat washers (13) to install the left front overhead guard tube onto the mesh plate. (Fig. 13)

22. Use a M8 hex screw (6) and a flat washer (7) to secure the left front guard tube (9) into the left overhead guard tube (2). (Fig. 13)

23. Install the front tube (8) onto the right overhead guard tube (1). (Fig. 13)

24. Use two M10 hex screws (10), four flat washers (11), and two hex nuts (12) to secure the front tube (8) onto the left overhead guard tube (2). (Fig. 13)

25. Use a M8 hex screw (6) and a flat washer (7) to secure the front tube (8) into the right overhead guard tube (1). (Fig. 13)

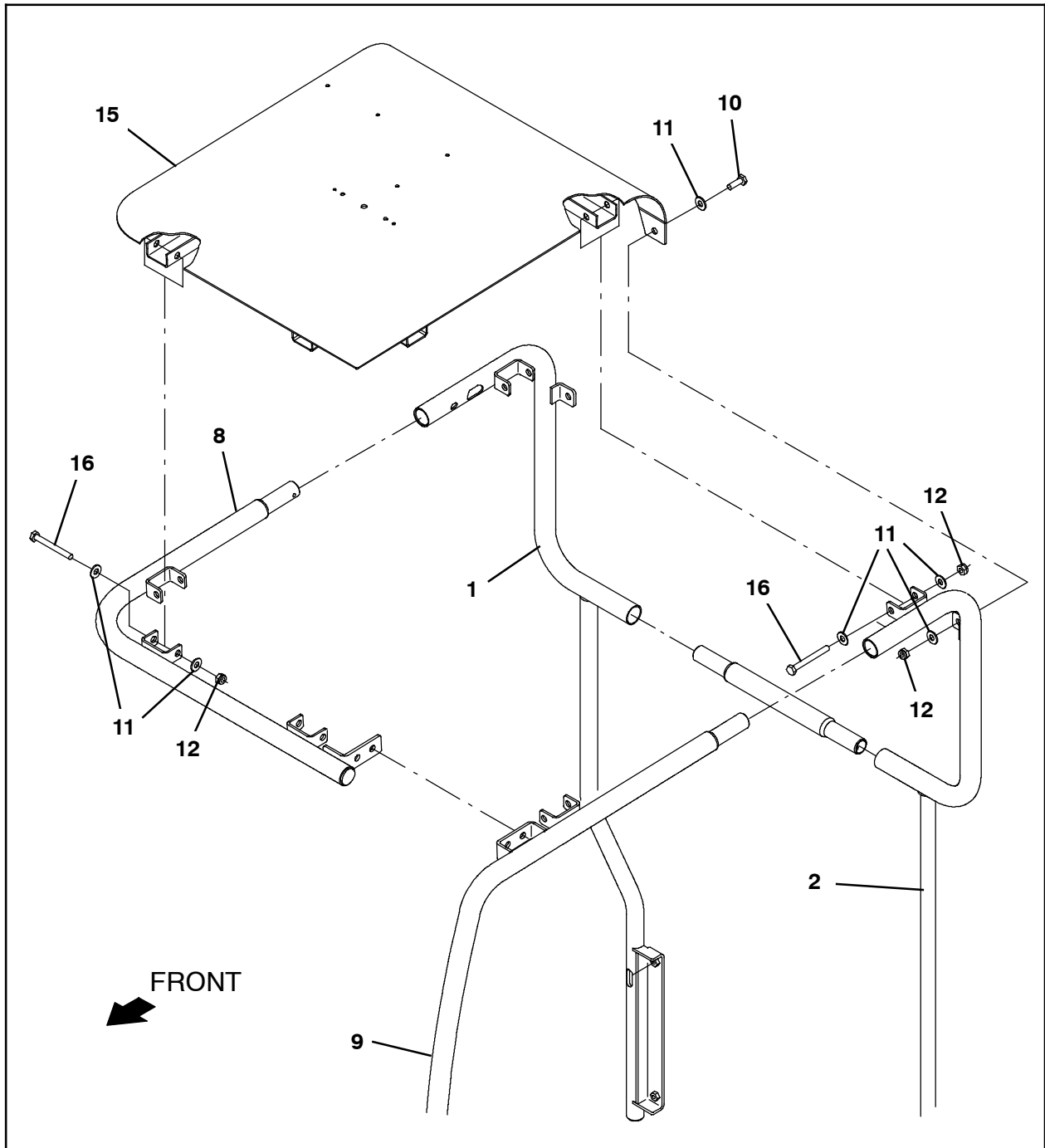


FIG. 14

26. Use six M10 hex screws (16), twelve flat washers (11), and six M10 hex nuts (12) to install the overhead guard top (15) onto the right overhead guard tube (1), left overhead guard tube (2), front tube (8), and left front guard tube (9). (Fig. 14)

27. Use a M10 hex screw (10), two flat washers (11), and a hex nut (12) to secure the overhead guard top (15) to the right overhead guard tube (1) and left overhead guard tube (2). (Fig. 14)

28. Adjust all previously installed parts as necessary and tighten all hardware to completely secure the overhead guard assembly to the machine. (Fig. 10 / Fig. 13 / Fig. 14)

29. Use the two M5 pan screws to install the front portion of the mesh to the left front guard tube (9). (Fig. 15)

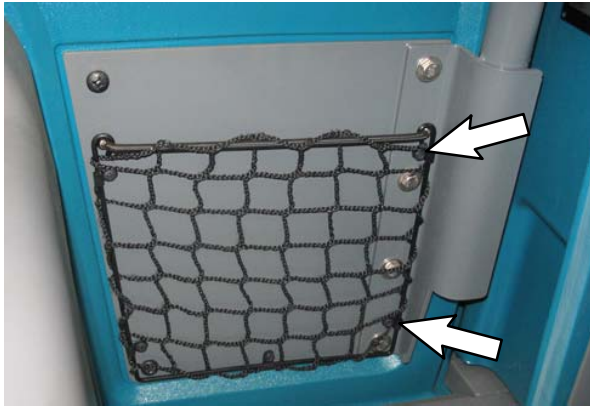


FIG. 15

30. **Machines with slide out battery option only:** Reinstall the slide out battery assembly. (Fig. 1)

31. Reinstall the battery into the battery compartment and reconnect the battery cable.

FOR SAFETY: When servicing machine, use a non-conductive battery removal device, use a hoist and adequate assistance when lifting batteries, follow site safety guidelines concerning battery removal, and battery installation must be done by trained personnel.

32. Fasten the FOPS label (20) to underside of the overhead guard. (Fig. 16)



FIG. 16

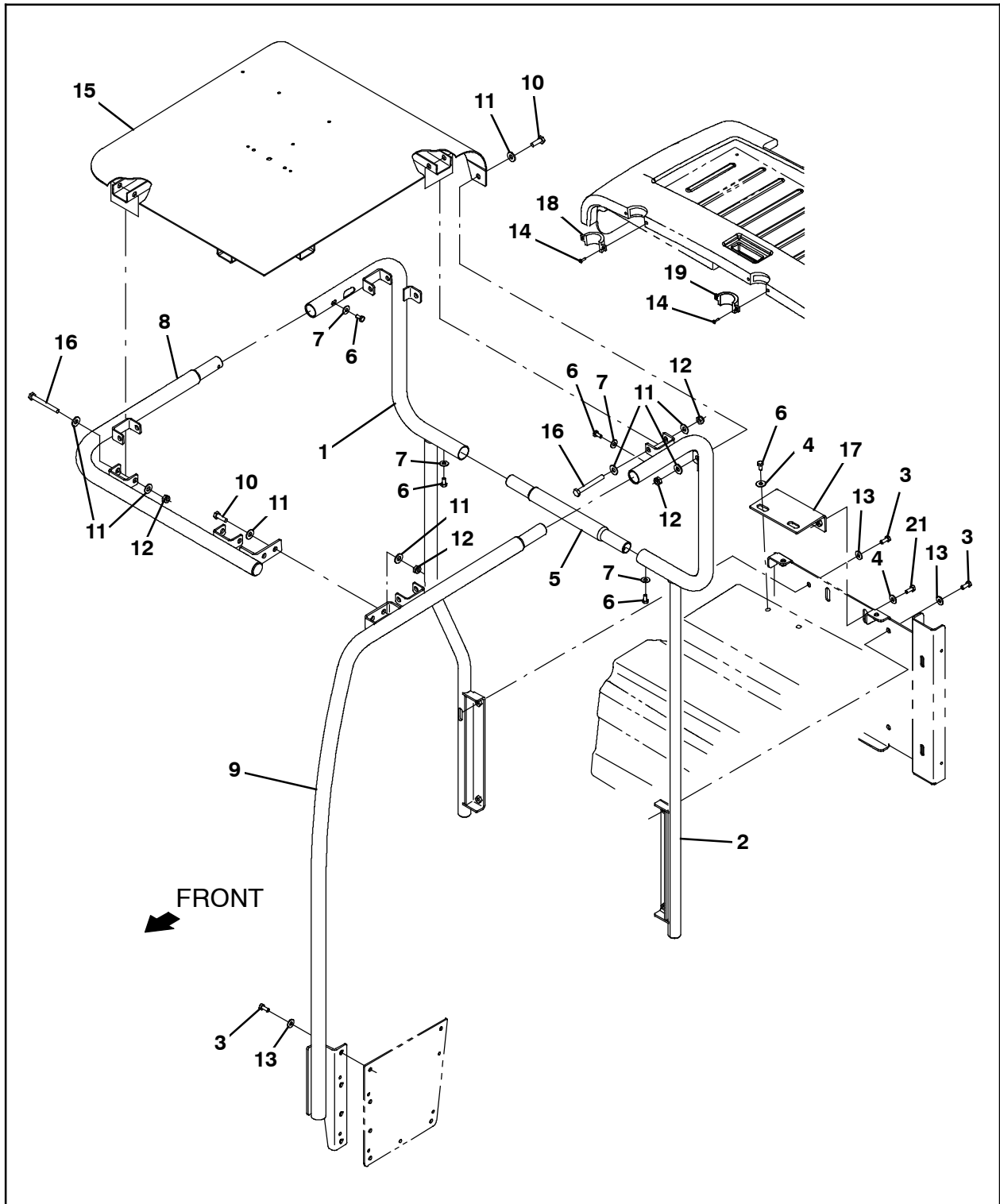


FIG. 17

Bill Of Materials For OHG Kit, DI [T17] - 9020029

Ref.	Tennant Part No.	Description	Qty.
1	1204974	Tube Wldt, OHG, RH	1
2	1204926	Tube Wldt, OHG, LH	1
3	12333	Screw, Hex, M8 X 1.25 X 25, SS, NI	8
4	1017218	Washer, Flat, 0.32B 1.00D .12, SS	4
5	1208128	Tube, OHG, Middle, Rear	1
6	49826	Screw, Hex, M8 X 1.25 X 16, NI, SS	6
7	39349	Washer, Flat, 0.31, SAE	4
8	1207444	Tube Wldt, Front	1
9	1207725	Tube Wldt, Guard, LH, Front	1
10	03192	Screw, Hex, M10 X 1.50 X 30, 8.8	4
11	01686	Washer, Flat, 0.44b 1.00d .08, SS	20
12	41430	Nut, Hex, Lock, M10 X 1.5, NI	10
13	01685	Washer, Flat, 0.38b 0.88d .08, SS	8
14	1060103	Screw, Pan, Phl, 08- 16 X 1.13, F/ Plstc	4
15	1204972	Guard Wldt, Top, OHG	1
16	03193	Screw, Hex, M10 X1.50 X 90, 8.8	6
17	1209915	Bracket Wldt, Mtg, OHG	1
18	1208710	Cover, OHG, Trim, RH	1
19	1208714	Cover, OHG, Trim, LH	1
20	1213207	Label, FOPS Specification [T17]	1
21	01686	Screw, Hex, M8 X 1.25 X 20, NI, SS	2
22	315909	Template, Battery Cover	1
23	315908	Template, Seat Shroud	1

TENNANT COMPANY
P. O. Box 1452
Minneapolis, MN 55440-1452